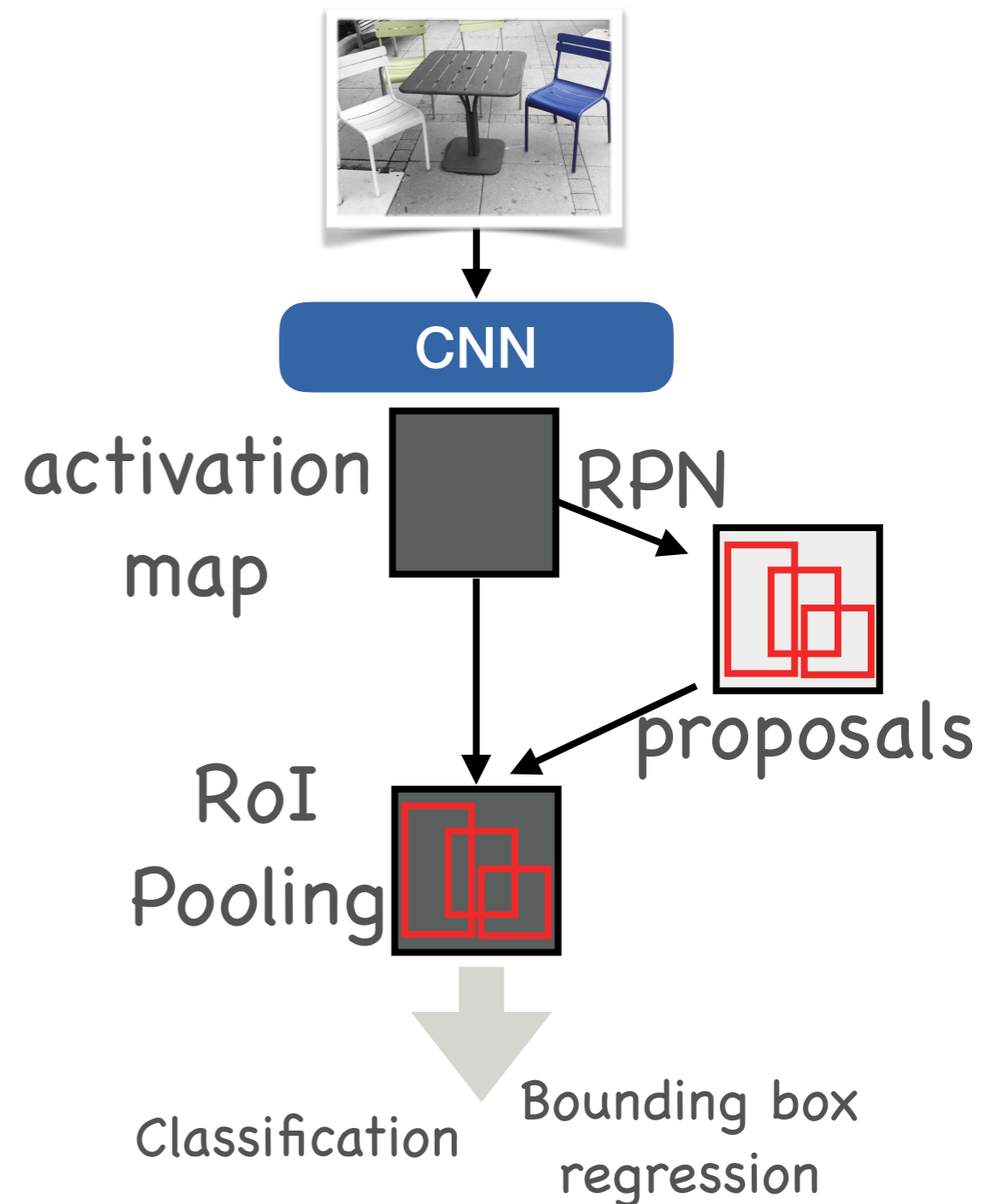


Case study: Mask RCNN

© 2019 Philipp Krähenbühl and Chao-Yuan Wu

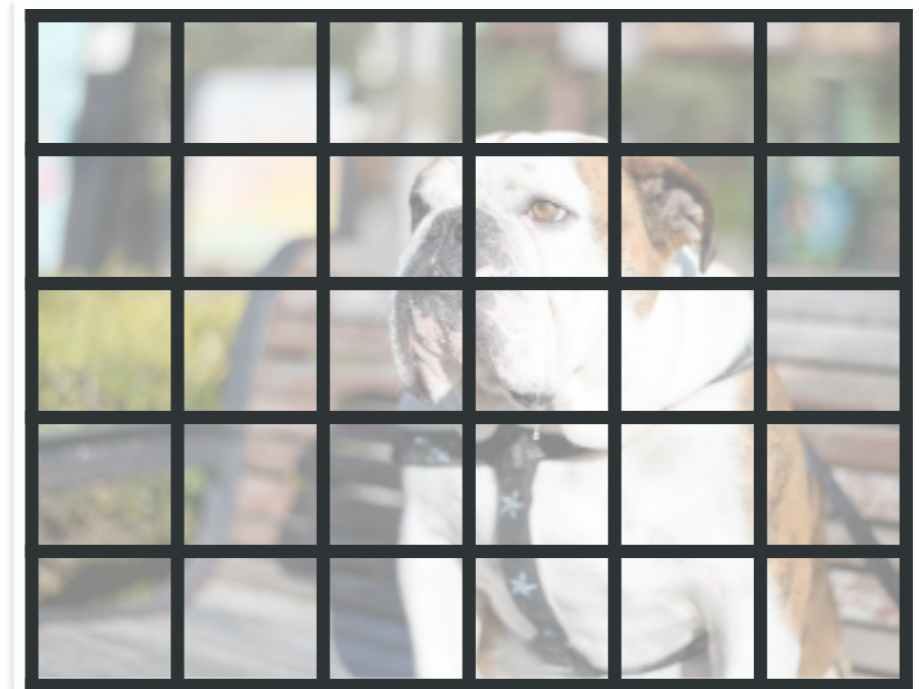
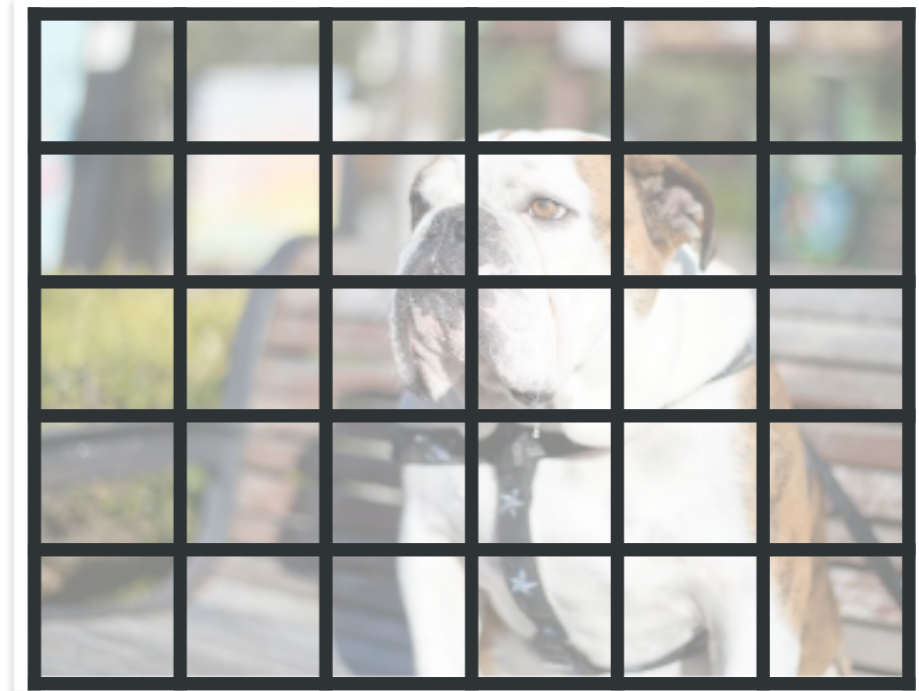
MaskRCNN

- Instance segmentation
- Segmentation by detection



MaskRCNN - trick 1

- ROI Pooling blurs activations
- Solution: ROI Align
 - ROI Pooling with linear interpolation



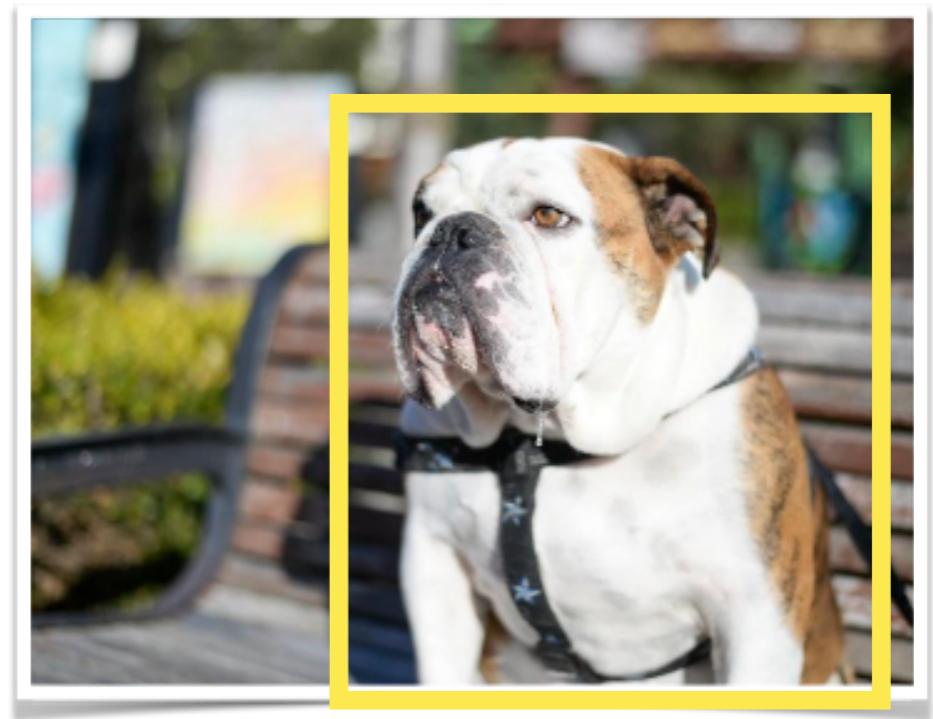
MaskRCNN - trick 2

- Masks do not need to be class specific



MaskRCNN - trick 3

- Masks are best predicted using an FCN



Summary

- MaskRCNN is basic building block for many instance level tasks
 - Pose estimation
 - 3D reconstruction